

Health requirements to be applied in establishments with beaches in order to contain the spread of the Coronavirus (COVID-19)



General rules



The facility's management must prepare and provide a form that collects employees' and customers' personal information, such as their full name, contact details and address, as well as their personal health information, particularly regarding the previous 14 days. The form must be completed prior to entering any tourism facility which offers beach access, or accompanying beach facilities. Questions include:

Name,
Contact number
and Address

Are you experiencing, or have you experienced, any of the following symptoms?

Fever | Cough | Fatigue |
Shortness of breath | Loss of
smell | Loss of taste | Sore
throat

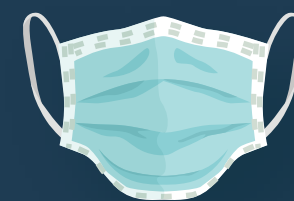
Have you been in contact with anyone exhibiting symptoms of COVID-19 or has been diagnosed with COVID-19?

Do you live with anyone who's under home-quarantine orders?

If a customer or a staff member answers **YES** to any of these questions, the facility must deny the customer or staff member entry instructed to call 444.



Beach visitors and staff members of the facility must complete the above-mentioned form.



Beach visitors must wear face masks at all times when inside any enclosed structure, or when in direct contact with any person who does not live within the same residence. Visitors who do not comply with the mandate will be required to leave.

Health requirements to be applied in establishments with beaches in order to contain the spread of the Coronavirus (COVID-19)



All workers must maintain a good standard of personal and general hygiene.



Employees' and visitors' temperature must be taken via an infrared thermometer.



Any person with a temperature of °37.5C or higher, or exhibiting symptoms associated with COVID19- will be denied and must call 444.



At least %70 alcohol-based sanitizers must be provided at the entrance and exit of structures, and at numerous places throughout the beach and any accompanying built structures.



Employees must wear Personal Protective Equipment (PPE) (at least a face mask and gloves) at all times during working hours. Employers are responsible for providing a sufficient supply of PPE for employees on shift at no cost to their employees.



The facility must record and maintain employees' contact information.



Install visual signs to define one-way flow between entry and exit points, and ensure that social distancing is maintained at all times.



Use visual signs indicating the maximum number of people in one group (5 people).



Install awareness signs and posters regarding hand washing guidelines and good hygiene standards (available at the Ministry of Health in multiple languages).



Employees must direct beach visitors (either those visiting individually or in groups of up to 5 people) to maintain a distance of 2 meters between each other.



The facility's employees must rearrange seating areas to conform to social distancing guidelines.



The establishment's facilities must be cleaned and disinfected in accordance with Ministry of Health guidelines, including used equipment reserved for daily rent after each use.



The facility's management should wash towels with hot water, at least °80C.



All showers, saunas, changing rooms and other common areas, except toilets, must be closed until further notice.



The facility must thoroughly clean and disinfect toilets after each use, disinfect electronic devices upon leaving work and should regularly disinfect frequently touched surfaces.



A sufficient number of trash receptacles must be provided for visitors to dispose of their used PPEs, empty bottles and other waste, and trash must be collected periodically.

Health requirements to be applied in establishments with beaches in order to contain the spread of the Coronavirus (COVID-19)



Facilities that have tourist facilities or commercial shops on the beaches may sell retail goods if the Ministry of Health's guidelines and requirements for commercial retail stores are met. Customers should be encouraged to conduct payments electronically. Employees must assist clients with their shopping to limit their contact with goods sold. Such facilities must apply typical social distancing measures such as floor markings and limits on the number of shoppers allowed in stores at any one time. This may mean that floor markings should extend outside of the store depending on store size.



The facility's management must instruct F&B retailers affiliated with it or within its spatial scope to only provide takeout and delivery services.



Establishments, in accordance with the provisions of this decree, are subject to inspection by the concerned government entities to ensure their compliance with health requirements.



The facility must close its beach if it is unable to implement in full the conditions and obligations stipulated in this decree.
